

KiTS Trading Interface

INTRODUCTION:

KiTS Trading Interface shows buying and selling rate of shares with respect to its symbol. Within its Market Watch, it contains more detailed information about each share. The user can buy or sell their shares through this application. Furthermore, the user can keep an eye on activities happening in the market. The detailed information about the features of Trade Cast Client is described below.

1. INSTALLATION PROCEDURE:

To install KiTS Application, open your web browser and type the given URL <http://www.kits.psx.com.pk> in URL bar. Download JAVA & KiTs Applications and run it.

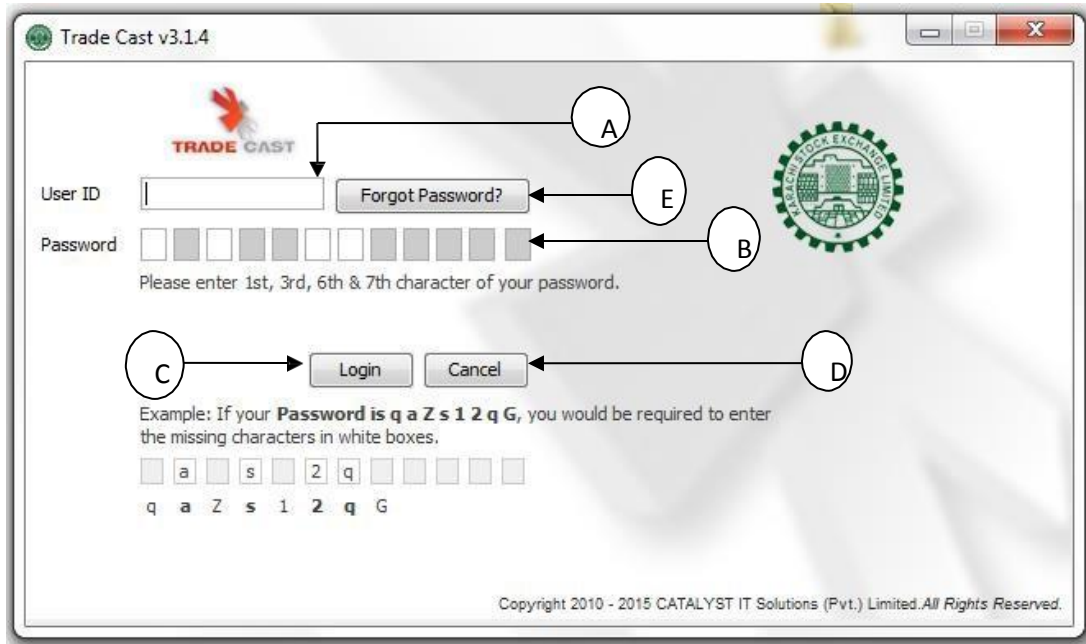
Please enter given User ID & Password sent to you in your email inbox.

The following login screen will appear after the downloading has finished.

KITS APPLICATION USER MANUAL – FOR WINDOWS

Login Window

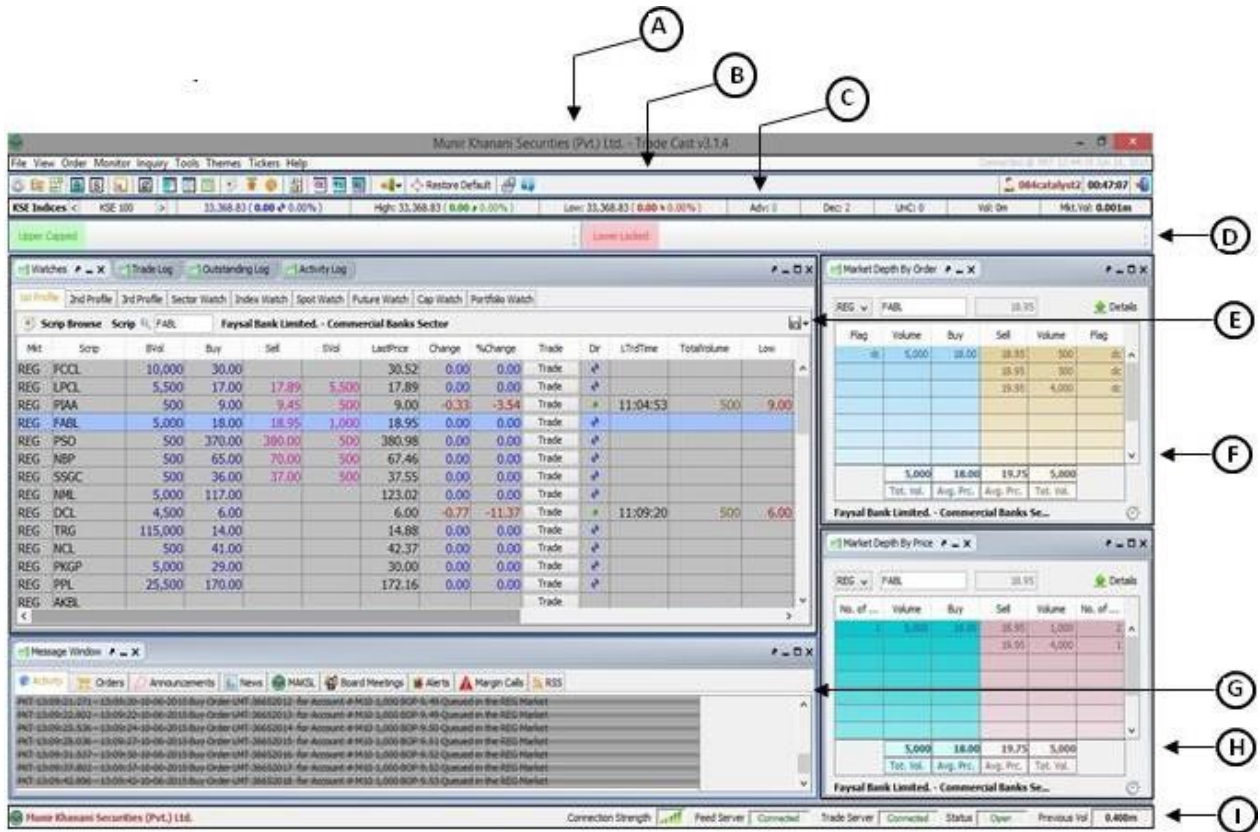
- A) Enter the 'User ID' here.
- B) Enter the 'Password' here.
- C) Proceed to enter the application, press the 'Login' button after providing user credentials
- D) To close the application click on 'Cancel' button.
- E) 'Forgot Password' use to recover the forgotten password



KITS APPLICATION USER MANUAL – FOR WINDOWS

2. GETTING STARTED:

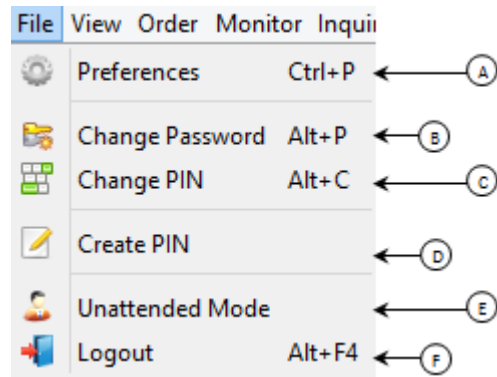
Main Window



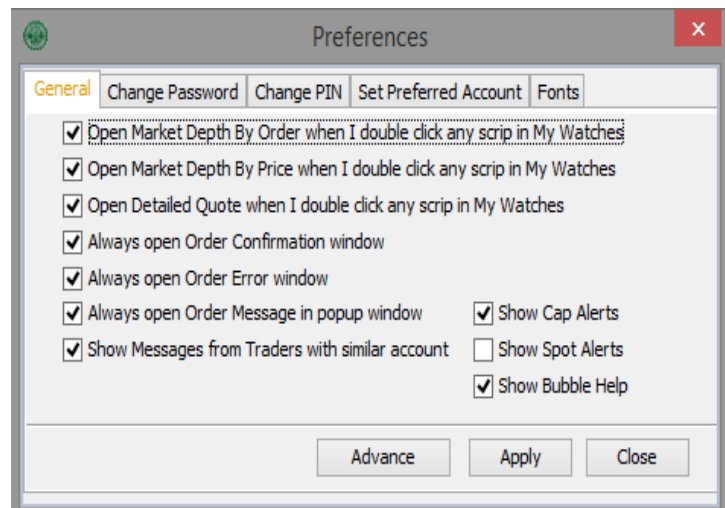
- A) 'Menu bar' from which you can select the menus.
- B) 'Tool bar' from which you can select the tools.
- C) 'Indices' bar.
- D) 'Upper Capped', 'Lower Locked' ticker.
- E) 'Watches' window.
- F) 'Market Depth By Order' window.
- G) 'Message Window' where you can view all the activity messages.
- H) 'Market Depth By Price' window.
- I) 'Status bar' where you can view the connectivity status.

KITS APPLICATION USER MANUAL – FOR WINDOWS

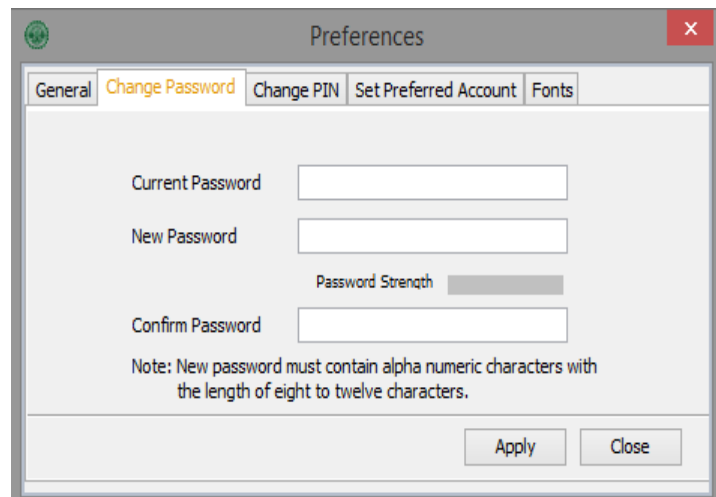
File Menu



A. 'Preferences' window.

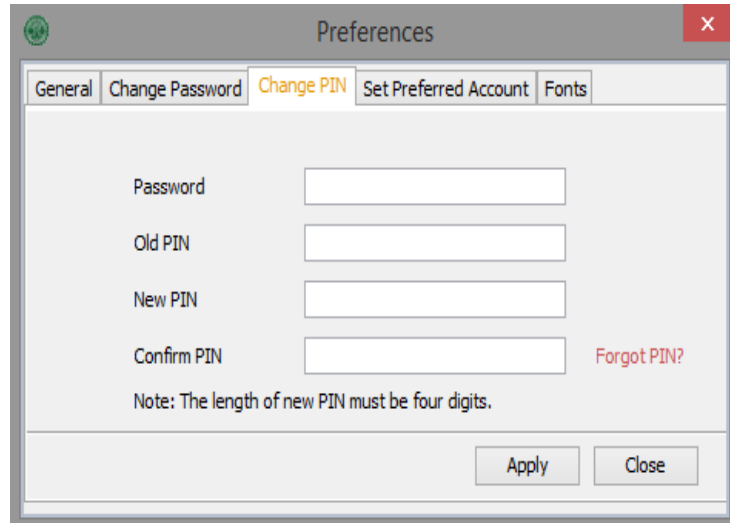


B. 'Change Password' window.

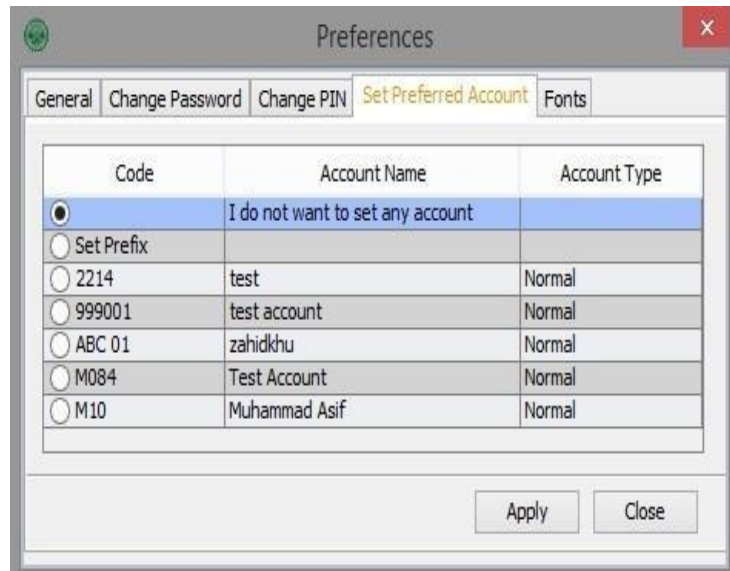


KITS APPLICATION USER MANUAL – FOR WINDOWS

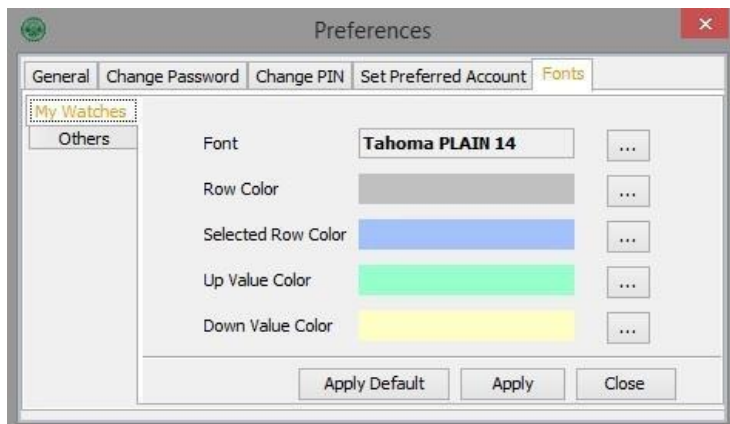
C. 'Change Pin' window.



• 'Set Preferred Account' window.

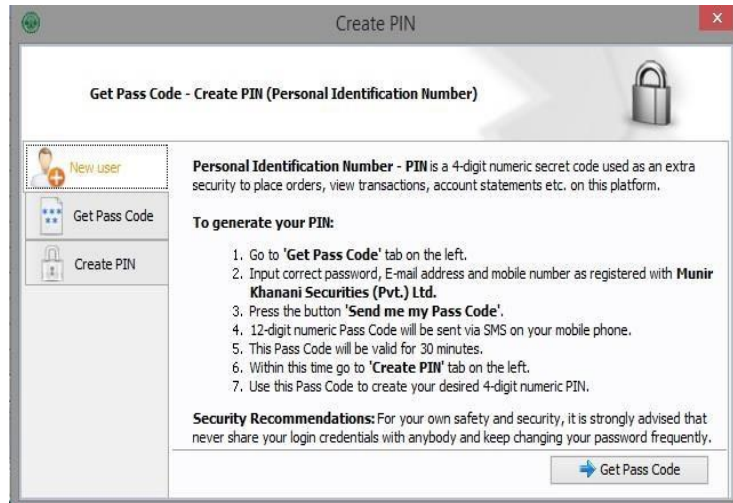


• 'Fonts' window.

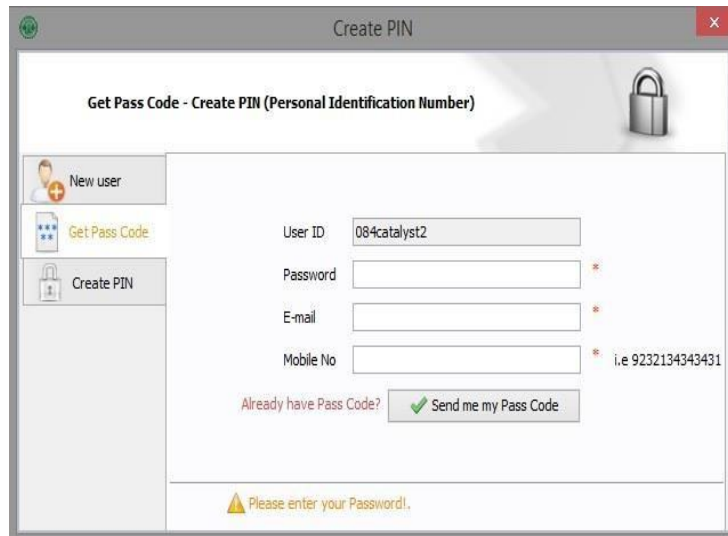


KITS APPLICATION USER MANUAL – FOR WINDOWS

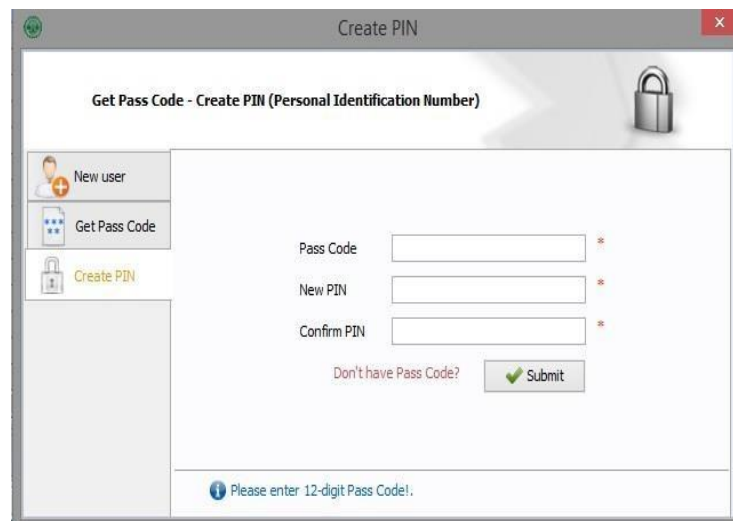
D. 'Create Pin' window.



Provide,
Password
Email
Mobile No
Click on 'Send me my Pass Code' option.

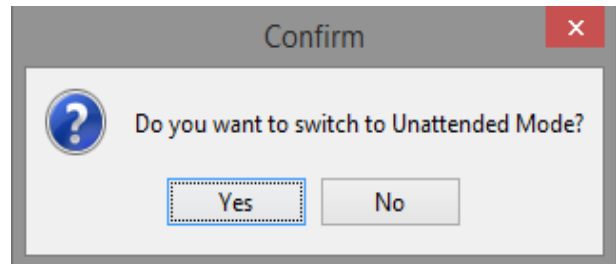


Provide the 'Pass Code' that has been emailed on the provided email ID, also the PIN which you want to set and click on 'Submit'.

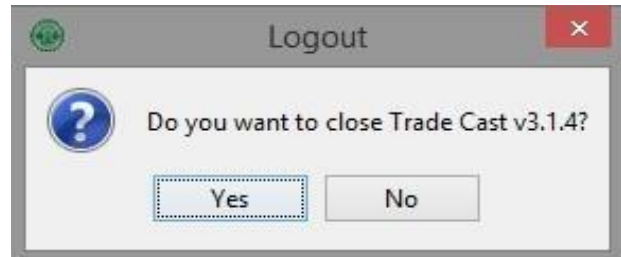


KITS APPLICATION USER MANUAL – FOR WINDOWS

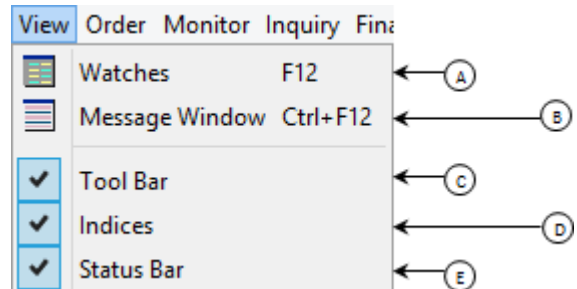
E. 'Unattended Mode' switching option.



F. 'Logout' confirmation window.

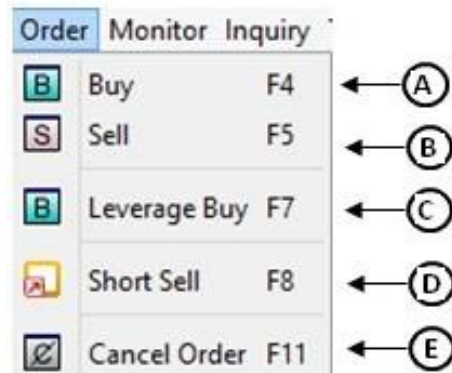


View Menu



- A. 'Watches Window' reopening option.
- B. 'Message Window' reopening option.
- C. 'Tool Bar' show/hide option.
- D. 'Indices' bar show/hide option.
- E. 'Status Bar' show/hide option.

Order Menu



KITS APPLICATION USER MANUAL – FOR WINDOWS

A) 'Buy' window.

B) 'Sell' window.

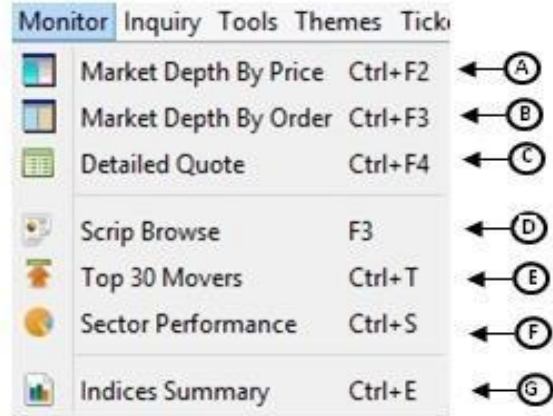
C) 'Leverage Buy' window.

D) 'Short Sell' window.

E) 'Cancel Order' window.

KITS APPLICATION USER MANUAL – FOR WINDOWS

Monitor Menu



A) 'Market Depth By Price' window.

| No. of ... | Volume | Buy | Sell | Volume | No. of ... |
|------------|--------|--------|--------|--------|------------|
| 1 | 100 | 193.01 | 193.48 | 200 | 1 |
| 3 | 3,100 | 193.00 | 193.70 | 100 | 1 |
| 1 | 2,000 | 192.80 | 193.90 | 100 | 1 |
| 2 | 3,500 | 192.75 | 193.95 | 100 | 1 |
| 2 | 600 | 192.51 | 193.96 | 1,000 | 2 |
| 2 | 600 | 192.50 | 193.97 | 100 | 1 |
| 1 | 100 | 192.40 | 193.98 | 500 | 1 |
| 1 | 100 | 192.20 | 193.99 | 100 | 1 |
| 1 | 100 | 192.10 | 194.00 | 5,200 | 9 |
| 1 | 100 | 192.02 | 194.50 | 400 | 3 |

Oil & Gas Development Company Ltd.(XD)...

B) Market Depth By Order' window.

| Flag | Volume | Buy | Sell | Volume | Flag |
|--------------|--------|---------------|---------------|--------------|------|
| dc | 100 | 193.01 | 193.48 | 200 | dc |
| dc | 500 | 193.00 | 193.70 | 100 | dc |
| dc | 2,500 | 193.00 | 193.90 | 100 | dc |
| dc | 100 | 193.00 | 193.95 | 100 | dc |
| dc | 2,000 | 192.80 | 193.96 | 500 | dc |
| dc | 500 | 192.75 | 193.96 | 500 | dc |
| dc | 3,000 | 192.75 | 193.97 | 100 | dc |
| dc | 100 | 192.51 | 193.98 | 500 | dc |
| 9,700 | | 192.82 | 193.91 | 2,300 | |
| Tot. Vol. | | Avg. Prc. | Avg. Prc. | Tot. Vol. | |

Oil & Gas Development Company Ltd.(XD)...

KITS APPLICATION USER MANUAL – FOR WINDOWS

C) 'Detailed Quote' window.

| Mkt | Scrip | Description | BVol | Buy | Sell | SVol |
|-----|-------|---------------------------|------|--------|--------|------|
| REG | PSO | Pakistan State Oil Co ... | 500 | 370.00 | 380.00 | 500 |

| Scrip Browse | | Settings | | Graphs and Charts | |
|----------------------|---------|----------------------|--|-------------------|--|
| Last Trade Time | | Todays Open | | | |
| Last Trade Price | 380.98 | Spread | | 10.00 | |
| Last Trade Volume | | % Spread | | 2.62 % | |
| Change | | Last Trade Date | | | |
| % Change | | Total Bid Quantity | | 500 | |
| Volume | | Total Offer Quantity | | 500 | |
| Approximated Value | | Bid / Offer Ratio | | 1.00 | |
| Trades | | No. Of Bids | | 1 | |
| Average Trade Volume | | No. Of Offers | | 1 | |
| Previous Close | 380.98 | High | | | |
| Minimum Price | 361.94 | Low | | | |
| Maximum Price | 400.02 | Average | | | |
| Market Range | 38.08 | Current Range | | | |
| % Market Range | 10.00 % | % Current Range | | | |

D) 'Scrip Browse' window.

| Market | Scrip | Company Name |
|--------|----------|-----------------------------|
| FUT | ABC-MAR | AA BB CC FUT |
| FUT | AHCL-FEB | Arif Habib Corporation Ltd. |
| FUT | AICL-FEB | Adamjee Insurance Co. Ltd. |
| FUT | AICL-MAR | Adamjee Insurance Co. Ltd. |
| FUT | AKBL-FEB | Askari Bank Limited. |
| FUT | AKBL-MAR | Askari Bank Limited. |
| FUT | ATRL-FEB | Attock Refinery Limited. |
| FUT | ATRL-MAR | Attock Refinery Limited. |
| FUT | BAFL-FEB | Bank Alfalah Ltd. |
| FUT | BAFL-MAR | Bank Alfalah Ltd. |

1,298 Record(s) Found

KITS APPLICATION USER MANUAL – FOR WINDOWS

E) 'Top 30 Movers' window.

| Top 30 Movers | | | | | | |
|-------------------|---|-------------------|---------------|---------|-----------|--------|
| By Volume | | | | | | |
| By Price Increase | By % Increase | By Price Decrease | By % Decrease | | | |
| Scrip | Company | Last | Change | %Change | Volume | Trades |
| PAEL | Pakistan Elektron Ltd. - Household Go... | 33.70 | 0.03 | 0.09 | 8,941,500 | 2,192 |
| TRG | TRG Pakistan Ltd. - Support Services ... | 11.81 | 0.77 | 6.97 | 7,085,500 | 1,362 |
| EFERT | Engro Fertilizers Limited. - Sector | 55.14 | 0.25 | 0.46 | 6,610,000 | 1,913 |
| JSCL | Jahangir Siddiqui & Company Ltd. - Fi... | 10.67 | 0.30 | 2.89 | 5,407,000 | 1,146 |
| FABL | Faysal Bank Limited. - Commercial Ban... | 16.30 | 0.38 | 2.39 | 4,342,000 | 672 |
| AVN | Avanceon Limited. - Sector | 28.39 | 0.92 | 3.35 | 4,006,500 | 1,494 |
| MLCF | Maple Leaf Cement Factory Ltd. - Con... | 28.91 | -0.40 | -1.36 | 2,482,500 | 670 |
| PIAA | Pakistan International Airline - Travel ... | 6.40 | 0.33 | 5.44 | 2,254,000 | 567 |
| ANL | Azgard Nine Limited - Personal Goods ... | 5.52 | 0.05 | 0.91 | 1,961,500 | 288 |
| KEL | K-Electric Limited. - Sector | 8.30 | 0.00 | 0.00 | 1,613,500 | 338 |
| NETSOL | NetSol Technologies Ltd. - Software a... | 30.13 | 0.42 | 1.41 | 1,531,000 | 730 |
| FCCL | Fauji Cement Co Ltd. - Construction a... | 19.70 | -0.01 | -0.05 | 1,494,000 | 333 |
| PSO | Pakistan State Oil Co Ltd. - Oil and Ga... | 377.65 | 2.77 | 0.74 | 1,490,600 | 2,199 |
| HASCOL | Hascal Petroleum Ltd. - Sector | 75.66 | 0.35 | 0.46 | 1,276,000 | 821 |
| SSGC | Sui Southern Gas Co Ltd. - Multitilitie... | 28.80 | -0.14 | -0.48 | 1,201,500 | 205 |
| PIBTL | Pakistan Intl. Bulk Terminal Ltd - Sector | 22.50 | -0.16 | -0.71 | 1,099,000 | 609 |
| BOP | Bank Of Punjab. - Commercial Banks S... | 8.25 | 0.00 | 0.00 | 1,072,000 | 234 |
| DGKC | D. G. Khan Cement Co. Ltd. - Constru... | 78.50 | -0.88 | -1.11 | 1,069,500 | 552 |
| LPCL | Lafarge Pakistan Cement Limited. - Co... | 15.55 | -0.12 | -0.77 | 1,010,500 | 196 |
| MARI | Mari Petroleum Company Ltd. - Oil an... | 417.55 | 8.73 | 2.14 | 1,002,000 | 2,179 |
| SILK | SILK Bank Limited - Commercial Banks ... | 2.14 | 0.06 | 2.88 | 948,000 | 29 |
| TPL | TPL Trakker Limited - Technology Hard... | 10.00 | 0.00 | 0.00 | 901,000 | 202 |
| HMB | Habib Metropolitan Bank Limited. - Com... | 32.00 | -0.19 | -0.59 | 897,500 | 45 |
| HCAR | Honda Atlas Cars (Pak) Ltd. - Autom... | 111.00 | 1.59 | 1.45 | 889,000 | 712 |
| NML | Nishat Mills Ltd. - Personal Goods (Tex... | 113.44 | 0.28 | 0.25 | 877,300 | 345 |
| HUBC | Hub Power Company Limited. - Electri... | 64.25 | -0.69 | -1.06 | 787,500 | 197 |
| BYCO | BYCO Petroleum Pak Ltd. - Oil and Ga... | 10.26 | 0.07 | 0.69 | 778,500 | 263 |
| GLAXO | Glaxo SmithKline Pakistan Ltd. - Pharm... | 160.00 | 0.29 | 0.18 | 724,300 | 1,420 |
| JSBL | JS Bank Limited. - Commercial Banks S... | 5.40 | -0.03 | -0.55 | 671,000 | 133 |
| NBP | National Bank Of Pakistan. - Commerd... | 58.35 | -0.04 | -0.07 | 653,000 | 216 |

F) 'Sector Performance' window.

| Sector Name(s) | Total Volume | Leader(s) | Leader(s) Volume |
|-------------------------------------|--------------|-----------|------------------|
| Commercial Banks | 11,044,900 | FABL | 4,342,000 |
| Household Goods | 8,947,000 | PAEL | 8,941,500 |
| Construction and Materials (Cement) | 7,336,500 | MLCF | 2,482,500 |
| Support Services | 7,085,500 | TRG | 7,085,500 |
| Financial Services | 6,272,500 | JSCL | 5,407,000 |
| Oil and Gas | 4,635,600 | PSO | 1,490,600 |
| Personal Goods (Textile) | 3,812,650 | ANL | 1,961,500 |
| Travel and Leisure | 2,254,000 | PIAA | 2,254,000 |
| Automobile and Parts | 1,774,900 | HCAR | 889,000 |
| Chemicals | 1,730,400 | ENGRO | 607,600 |
| Software and Computer Services | 1,531,000 | NETSOL | 1,531,000 |
| Electricity | 1,458,000 | HUBC | 787,500 |
| Equity Investment Instruments | 1,452,500 | FHAM | 639,500 |
| Multitilities (Gas and water) | 1,411,500 | SSGC | 1,201,500 |
| Pharma and Bio Tech | 1,349,200 | GLAXO | 724,300 |

30 Sector(s) Refresh

KITS APPLICATION USER MANUAL – FOR WINDOWS

G) 'Indices Summary' window.

| Exchange | | | | | | | | | |
|-----------|-----------|------------|---------------|--------|------------------|--------|-------|--------|--|
| Advancers | Decliners | Un Changed | Total Symbols | Market | Number of Trades | Volume | Value | Status | |
| 0 | 2 | 0 | 2 | REG | 2 | 1,000 | 7,500 | Opened | |

| Indices | | | | | | | | | |
|---------|----------------------------|----------------------------|----------------------------|--------|----------|--|--|--|--|
| Indices | Index | High | Low | Volume | Value | | | | |
| KSE 100 | 33,368.83 (0.00 ↗ 0.00 %) | 33,368.83 (0.00 ↗ 0.00 %) | 33,368.83 (0.00 ↗ 0.00 %) | 0 | 0.00 | | | | |
| KSE 30 | 21,787.45 (0.00 ↗ 0.00 %) | 21,787.45 (0.00 ↗ 0.00 %) | 21,787.45 (0.00 ↗ 0.00 %) | 0 | 0.00 | | | | |
| KMI 30 | 53,836.00 (0.00 ↗ 0.00 %) | 53,836.00 (0.00 ↗ 0.00 %) | 53,836.00 (0.00 ↗ 0.00 %) | 0 | 0.00 | | | | |
| ALLSHR | 23,825.13 (0.00 ↗ 0.00 %) | 23,825.13 (0.00 ↗ 0.00 %) | 23,825.13 (0.00 ↗ 0.00 %) | 1,000 | 7,500.00 | | | | |

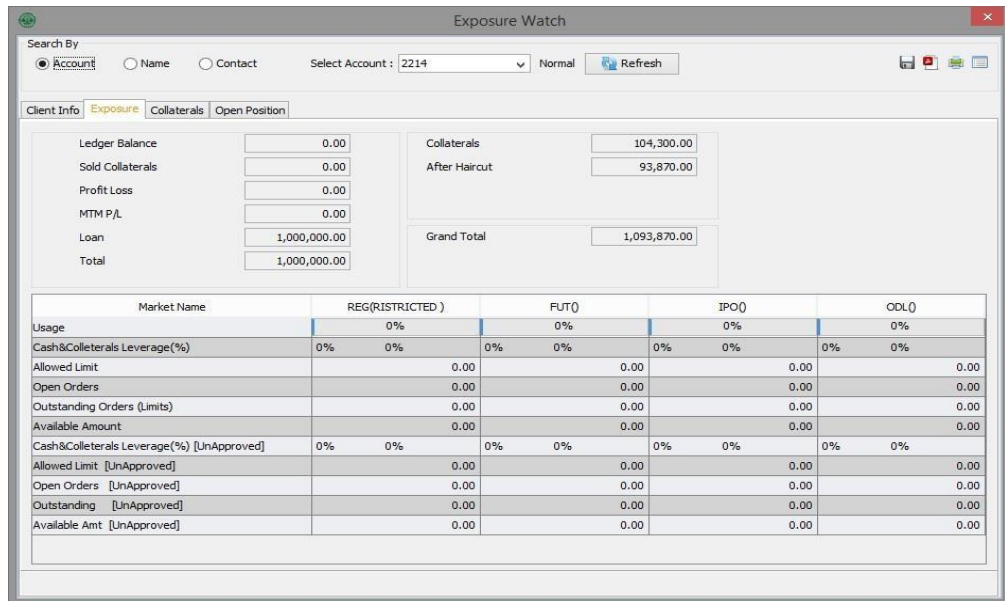
| Previous Indices | | | | | | | | | |
|------------------|--------------------------------|-----------------------------|--------------------------------|---------|---------------|--|--|--|--|
| Indices | Index | High | Low | Volume | Value | | | | |
| KSE 100 | 33,349.90 (-18.89 ↘ -0.06 %) | 33,380.80 (12.01 ↗ 0.04 %) | 33,349.90 (-18.89 ↘ -0.06 %) | 403,100 | 12,157,059.00 | | | | |
| KSE 30 | 21,770.30 (-17.17 ↘ -0.08 %) | 21,799.10 (11.63 ↗ 0.05 %) | 21,770.30 (-17.17 ↘ -0.08 %) | 401,100 | 12,107,099.00 | | | | |
| KMI 30 | 53,712.50 (-123.51 ↘ -0.23 %) | 53,837.90 (1.89 ↗ 0.00 %) | 53,712.50 (-123.51 ↘ -0.23 %) | 404,100 | 12,506,109.00 | | | | |
| ALLSHR | 23,819.70 (-5.42 ↘ -0.02 %) | 23,833.00 (7.88 ↗ 0.03 %) | 23,819.70 (-5.42 ↘ -0.02 %) | 408,100 | 12,635,069.00 | | | | |

Inquiry Menu

| Inquiry | Tools | Themes | Tickers | |
|---------|-----------------|---------|---------|-------|
| | Exposure Watch | F2 | | ← (A) |
| | Outstanding Log | Ctrl+F5 | | ← (B) |
| | Trade Log | Ctrl+F6 | | ← (C) |
| | Activity Log | Ctrl+F7 | | ← (D) |

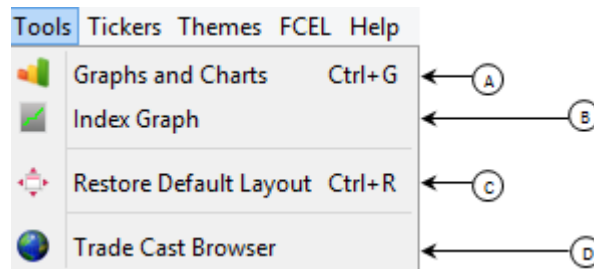
KITS APPLICATION USER MANUAL – FOR WINDOWS

A) 'Exposure Watch' window.

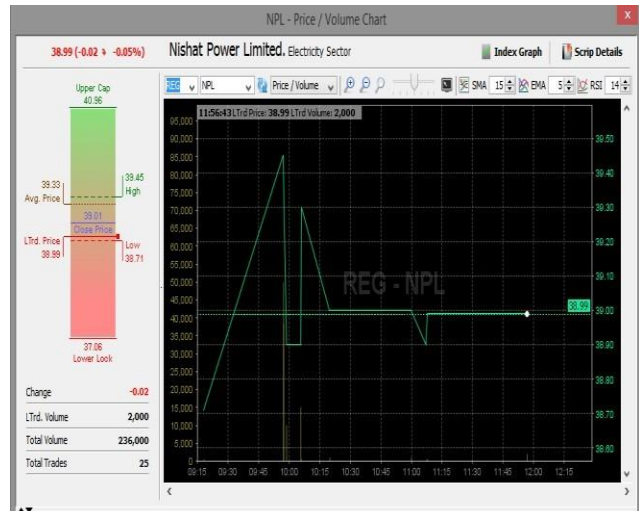


- B) 'Outstanding Log' window.
- C) 'Trade Log' window.
- D) 'Activity Log' window.

Tools Menu

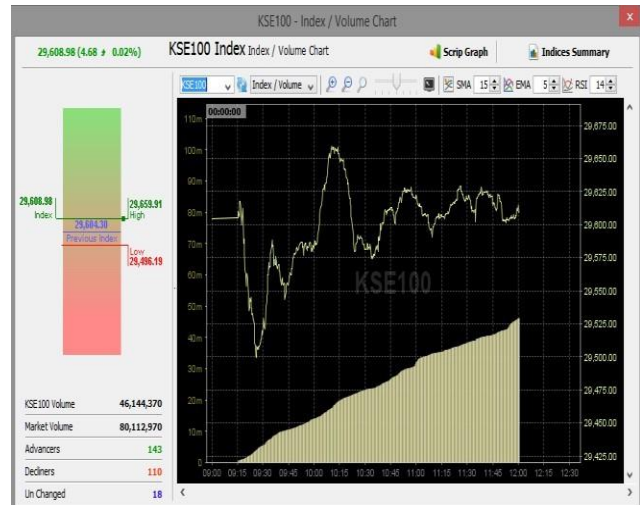


A) 'Graphs and Charts' window.



KITS APPLICATION USER MANUAL – FOR WINDOWS

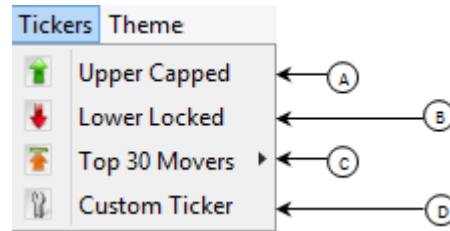
B) 'Index Graph' window.



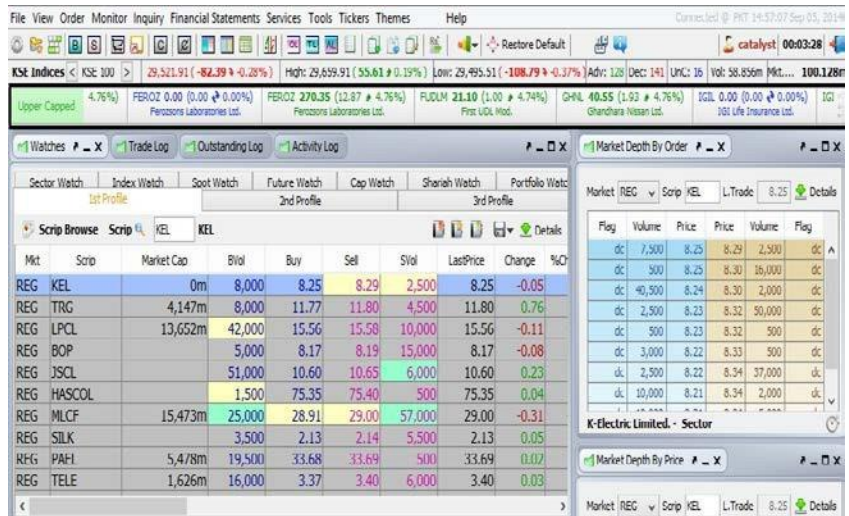
C) 'Default layout' restoration option.

D) 'Trade Cast Browser' window option.

Tickers Menu



A) 'Upper Capped' ticker.

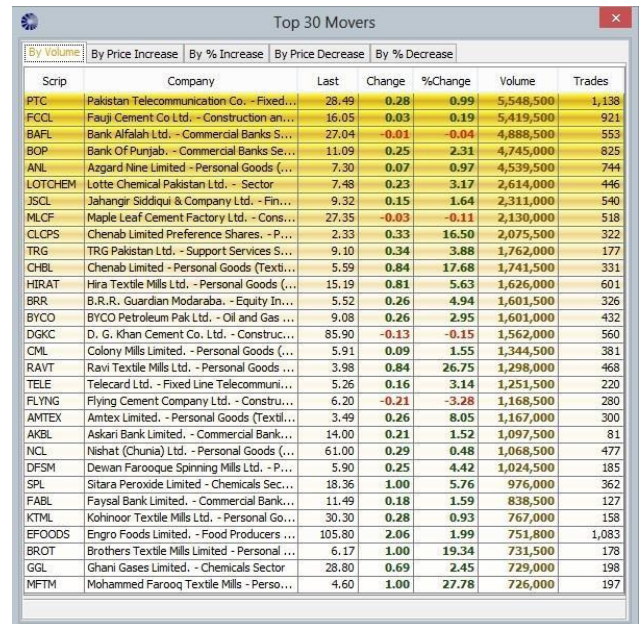


KITS APPLICATION USER MANUAL – FOR WINDOWS

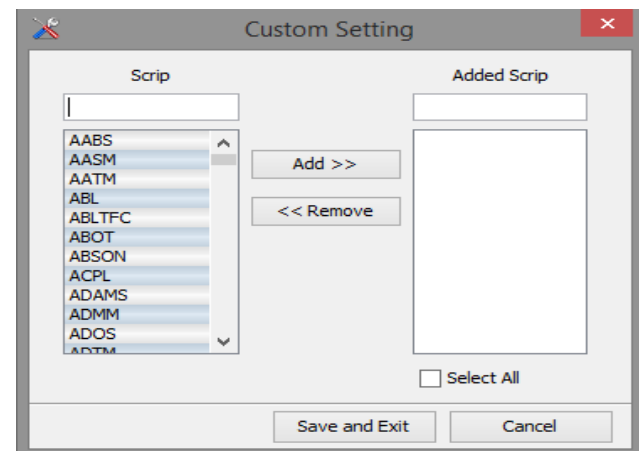
B) 'Lower Locked' ticker.



C) 'Top 30 Movers' window option.



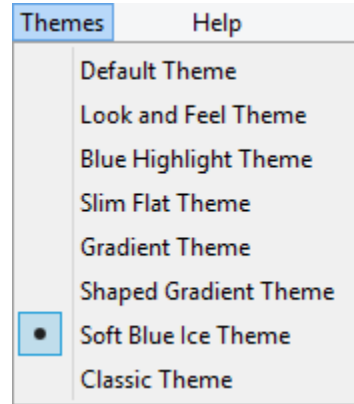
D) 'Custom setting' window.



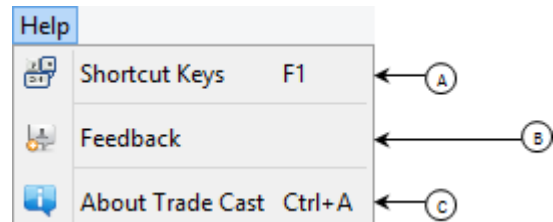
KITS APPLICATION USER MANUAL – FOR WINDOWS

Themes Menu

‘Theme’ selection menu.



Help Menu



A) ‘Shortcut Keys’ window.

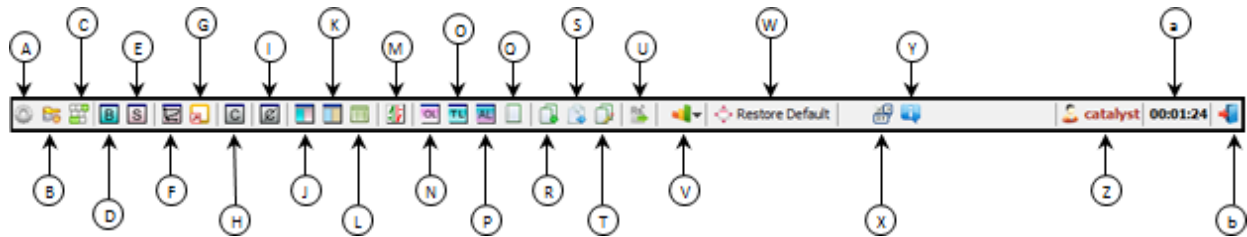


KITS APPLICATION USER MANUAL – FOR WINDOWS

B) ‘About’ window.



Toolbar



- A) Preferences
- B) Change Password
- C) Change PIN
- D) Buy
- E) Sell
- F) Bunch Order
- G) Short Sell
- H) -----
- I) Cancel Order
- J) Market Depth By Price
- K) Market Depth By Order
- L) Detailed Quote
- M) Exposure Watch
- N) Outstanding Log

- O) Trade Log
- P) Activity Log
- Q) Daily Trade Report
- R) Account Statement
- S) Order History
- T) Cash Withdrawal Statement
- U) Cash Withdrawal Request
- V) Graphs and Charts
- W) Restore Default
- X) Shortcut Keys
- Y) About Trade Cast
- Z) User ID
- a) Login Duration
- b) Logout

KITS APPLICATION USER MANUAL – FOR WINDOWS

Watches Window



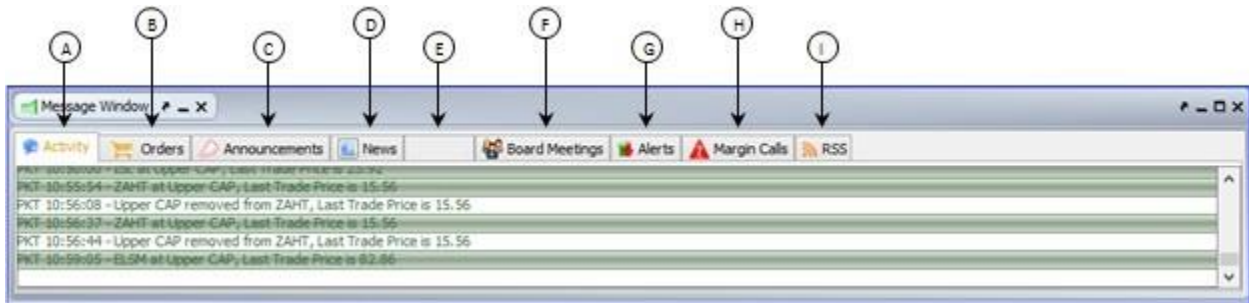
- A) Watches.
- B) Trade Log.
- C) Outstanding Log.
- D) Activity Log.



- E) 1st Profile.
- F) 2nd Profile.
- G) 3rd Profile.
- H) Sector Watch.
- I) IndexWatch.
- J) SpotWatch.
- K) FutureWatch.
- L) CapWatch.
- M) Shariah Watch.
- N) Portfolio Watch.

KITS APPLICATION USER MANUAL – FOR WINDOWS

Message Window



- A) Activity
- B) Orders
- C) Announcements
- D) News
- E) House Messages

- F) Board Meetings
- G) Alerts
- H) Margin Calls
- I) RSS